

## Borde bañera 4 agujeros ARCANA CERAMIC\_AC000260

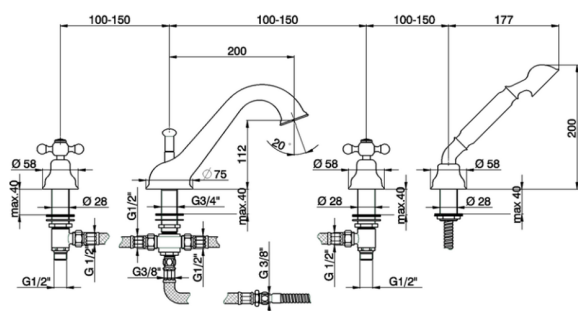
MODELO **AC000260**

Borde bañera 4 agujeros,desviador 2 salidas,duchita una función Arcana,flexible de Latón 175 cm



ACABADOS DISPONIBLES

-  **21** 21 Cromo
-  **24** 24 Oro
-  **26** 26 Cobre Viejo
-  **27** 27 Bronce Viejo
-  **2A** 2A Niquel Satinado Cepillado
-  **74** 74 Cromo/Oro



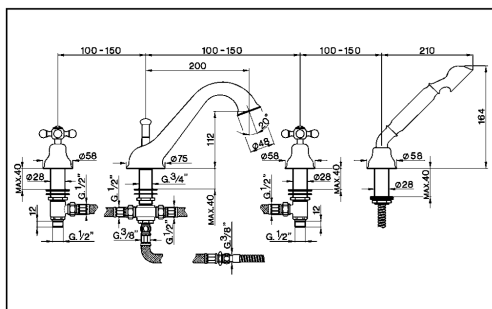
CARACTERÍSTICAS



## Borde bañera 4 agujeros ARCANA CERAMIC\_AC000260

cisal

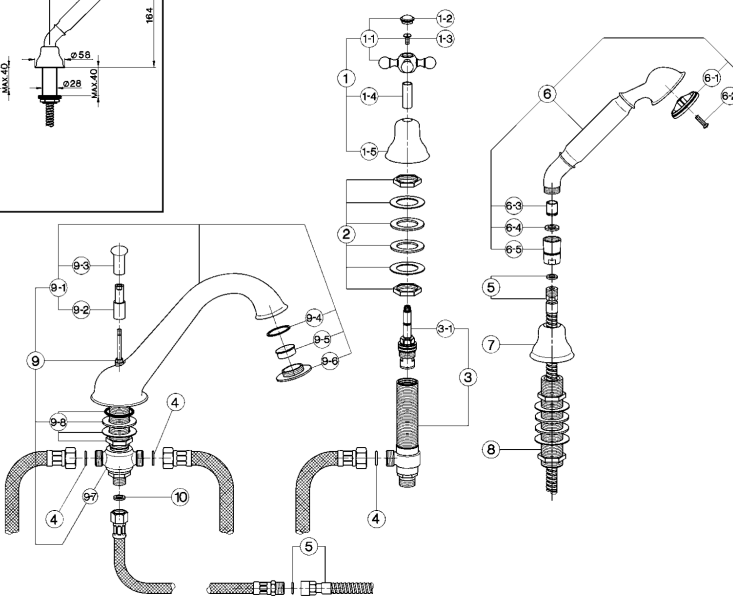
### AC 00026 (AC 00025)



- Batteria bordo vasca a 4 fori
- Deck-mounted 4-hole bath mixer
- Badebatterie - 4 Loch -
- Mélangeur B/D 4-trous sur gorge

bar	PORTATA BOCCA DI EROGAZIONE * SPOUT FLOW RATE DURCHFLOß WANNENEINLAUF DÉBIT BEC DEVERSEUR l/min.	
0,5	21,5	
1	31,5	
2	44,5	
3	55	
4	67,5	
5	/	

\* con rompigetto  
with antispash  
mit Strahlregler  
avec brise-jet



NR.	DESCRIZIONE DESCRIPTION BESCHREIBUNG DESCRIPTION	N. CODICE CODE NO. WERKSNR. NR. CODE
1	Maniglia con cappuccio "AR" Handle with escutcheon "AR" Griff + Abdeckkappe "AR" Crosillon + rosace "AR"	ZZ 90093 0
1-1	Maniglia "AR" con vite e piacchetta Handle with screw and plate "AR" Griff "AR" mit Schraube und Abdeckkappe Crosillon avec vis et plaquette "AR"	ZZ 90307 0
1-2	Piacchetta a vite maniglia "AR" Cap for handle "AR" Abdeckkappe "AR" Griff Plaquette cache - vis crois. "AR"	ZZ 92617 0
1-3	Vite M.4,5x10 lb. tc. zigrinata Screw M.4,5x10 Schraube M.4,5x10 Vis M.4,5x10	ZZ 92609 0
1-4	Tubetto copriasta "AR" H.31 Tube "AR" H.31 Abdeckkappe Oberteil "AR" H.31 Tube couvre-lête "AR" H.31	ZZ 92620 0
1-5	Cappuccio a campana "AR" Escutcheon "AR" Abdeckkappe "AR" Rosace "AR"	ZZ 92598 0
2	Set installazione batteria lavabo Installation set basin mixer Befestigungsset Set installation	ZZ 92756 0
3	Piantana lavabo "AC" (se montata crociera) Tail piece-basin mixer "AC" (mounted conn) Unterteil-WF "AC" (montiert Kreuzstück) Corp lateral "AC" (raccord à croix)	ZZ 92896 0
3-1	Vitone ceramico DX per batteria "AC" Ceramic headvalve 1/2" right "AC"-long Keramikoberteil 1/2"-rechts "AC"-lang Tête céramique 1/2" droite "AC"-longue	ZZ 92859 0
4	Guarnizione fibra 18,5x11x2 Gasket rubber 18,5x11x2 Fiberdichtung 18,5x11x2 Joint en fibre 18,5x11x2	ZZ 92714 0
5	Flessibile 175 cm Ø14 3/8" x M.15x1 Flex 175 cm Ø14 3/8" M.15x1 Brausschlauch 175 cm Ø14 3/8" x M.15x1 Flex 175 cm Ø14 3/8" x M.15x1	ZZ 92757 0

NR.	DESCRIZIONE DESCRIPTION BESCHREIBUNG DESCRIPTION	N. CODICE CODE NO. WERKSNR. NR. CODE
6	Doccia per batteria vasca "AR" Handshower for bath mixer "AR" Handbrause-WB-"AR" Douchette "AR" sur gorge	ZZ 90336 0
6-1	Diffusore doccia "AR" Spray-kit handshower "AR" Einsatz 1/Brause "AR" Diffuseur douchette "AR"	ZZ 90544 0
6-2	Vite di fissaggio diffusore per doccia in ottone Fixing screw for spray-kit handshower Befestigungsschraube f.Einsatz 1.Br. in Messing Vis fixation diffuseur pour douchette en laiton	ZZ 92640 0
6-2	Vite di fissaggio diffusore per doccia in ABS Fixing screw for spray-kit ABS handshower Befestigungsschraube f. Einsatz 1.Brause in ABS Vis de fixation diffuseur pour douchette en ABS	ZZ 93401 0
6-3	Valvola anti-ritorno Ø15 per doccia Back-flow valve Ø15 Durchflussverhinderer Ø15 Clapet anti-retour Ø15	ZZ 92956 0
6-4	Guarnizione fibra 18,5x11x2 Gasket rubber 18,5x11x2 Fiberdichtung 18,5x11x2 Joint en fibre 18,5x11x2	ZZ 92714 0
6-5	Raccordo conico doccia batteria vasca "AR" Connection for shower "AR" Anschluss "AR" Raccord douche s/gorge "AR"	ZZ 90337 0
7	Cappuccio supporto doccia bordo vasca "AR" Escutcheon shower "AR" Abdeckkappe "AR" Rosace douche "AR"	ZZ 92599 0
8	Supporto doccia batteria bordo vasca "AR" Deck-mounted handshower support "AR" Brausehalter "AR" Support douche "AR"	ZZ 90104 0
9	Bocca batteria vasca "AC" con deviazione Spout bath mixer "AC" with diverter Auslauf-WB-"AC" mit Umstellung Bec bain/douche "AC" avec inverseur	ZZ 92048 0
9	Bocca batteria vasca "AC" senza deviazione Spout bath mixer "AC" without diverter Auslauf-WB-"AC" ohne Umstellung Bec bain/douche "AC" sans inverseur	ZZ 92054 0

NR.	DESCRIZIONE DESCRIPTION BESCHREIBUNG DESCRIPTION	N. CODICE CODE NO. WERKSNR. NR. CODE
9-1	Bocca batteria vasca "AC" Spout bath mixer "AC" Auslauf-WB-"AC" Bec bain/douche "AC"	ZZ 90944 0
9-2	Vite bloccaggio bocca batteria vasca Screw for spout Befestigungsschraube Vis x bec sur gorge	ZZ 92648 0
9-3	Pomolo per deviazione bocca batteria vasca Knob for bath spout Zugknopf Umsteller Pommeau x inverseur	ZZ 92649 0
9-4	Guarnizione NBR 70 SH. 32x28,2x1 Gasket NBR 70 SH. 32x28,2x1 Dichtung NBR 70 SH. 32x28,2x1 Joint NBR 70 SH. 32x28,2x1	ZZ 92995 0
9-5	Rompigetto per bocca batteria vasca Antispash for bath spout Strahlregler Brise-jet pour bain/douche	ZZ 92897 0
9-6	Bordino bocca batteria vasca "AR" Overfill bath spout "AR" Kante 1/WB - Auslauf "AR" Garniture B/D "AR"	ZZ 92626 0
9-7	Crociera bocca batteria bordo vasca completa Cross connection for bath mixer Verbindungsstück pass. zu SU/AR/AC 26 Raccord a croix pour bec sur gorge	ZZ 92914 0
9-8	Set installazione bocca batteria bordo vasca Installation set for deck-mounted spout Befestigungsset Set installation	ZZ 92975 0
10	Guarnizione fibra 3/8" Gasket rubber 3/8" Fiberdichtung 3/8" Joint en fibre 3/8"	ZZ 92696 0

AC.2

AC000260

<https://es.cisal.it/borde-banera-4-agujeros-arcana-ceramic-ac000260>

2026-06-18