

## Panel de ducha termostático 2 funciones WAVE\_WA005000

MODELO **WA005000**

Panel de ducha termostático 2 funciones, columna fija, alcachofa de la ducha, ducha de mano integrado, comprensivo de parte empotrada

ACABADOS DISPONIBLES



**21** 21 Cromo



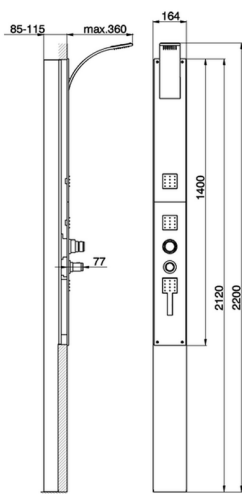
**2F** 2F Niquel Cepillado



CARACTERÍSTICAS

Recambio Cartucho **ZZ93185004-ZZ93186004**

**Cartucho Termostático 10x24**

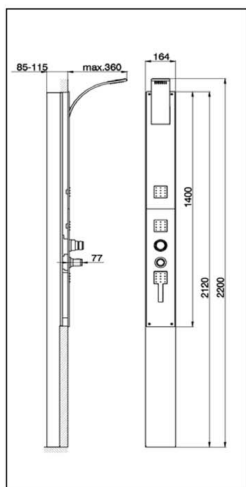


### Termostático

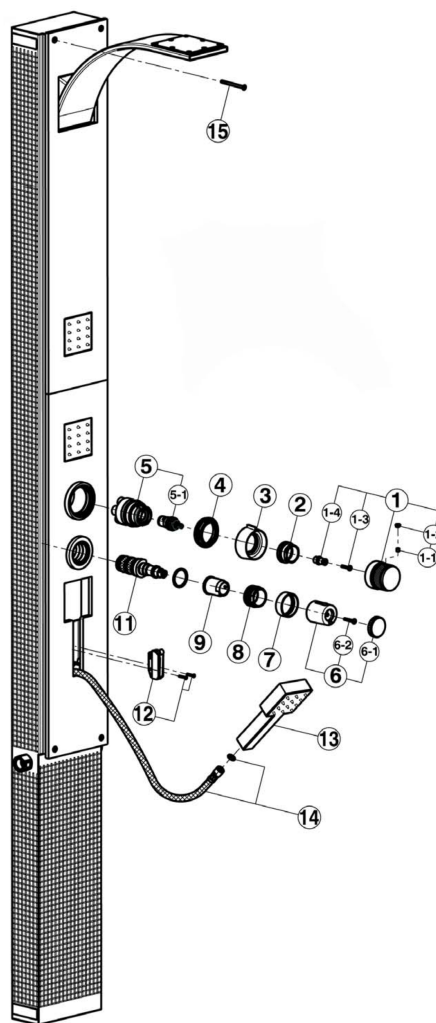
El termostático Cisal es tu gestor personal del agua, ayudándote a manejar, controlar y ahorrar agua y energía.



## Panel de ducha termostático 2 funciones WAVE\_WA005000



NR.	DESCRIZIONE DESCRIPTION BESCHREIBUNG DESCRIPTION	N. CODICE CODE NO. WERSNR. NR. CODE	NR.	DESCRIZIONE DESCRIPTION BESCHREIBUNG DESCRIPTION	N. CODICE CODE NO. WERSNR. NR. CODE	NR.	DESCRIZIONE DESCRIPTION BESCHREIBUNG DESCRIPTION	N. CODICE CODE NO. WERSNR. NR. CODE
1	Manglia deviatore ceramico a vie "LS" Handle 4-way diverter "LS" Griff 4-Wege Umsteller "LS" Croisillon inverseur ceramique "LS"	ZZ933790	5	Vitone 1/2" Headvalve 1/2" Oberteil 1/2" Tête 1/2"	ZZ940500	12	Dispositivo di sblocco per doccia Release device for shower Absperrvorrichtung fuer Brause Dispositif de déblocage pour douche	ZZ945080
1.1	Grani punta piano inox M.6x6 Screw-stainless steel M.6x6 Maderschraube M.6x6 Vis speciale inox M.6x6	ZZ926450	6	Manglia "LS" regolazione temperatura Handle - temperature set-up "LS" Griff "LS" Temperaturabgrenzer Croisillon "LS" gèrèrè	ZZ935660	13	Doccia WA Handshower WA Handbrause WA Douchette	ZZ945080
1.2	Cap for lever Abdeckkappe H Hebel Piquette lever Vis M.4x20 B. 1: zigrinata	ZZ927110	6.1	Cap "LS" lever for thermostatic mixer Abdeckkappe Griff "LS" f. Thermostab. Piquette croisillon LS pour thermostab. Vis M.4x25	ZZ935670	14	Flessibile M.15x1G M.15x1F Flex M.15x1G M.15x1F Anschlussschlauch M.15x1G M.15x1F Flex M.15x1G M.15x1F Vis M.5x45	ZZ945050
1.3	Screw M.4x20 Schraube M.4x20 Vis M.4x20	ZZ928500	6.2	Screw M.4x25 Schraube M.4x25 Vis M.4x25	ZZ933120	15	Screw M.5x45 Schraube M.5x45 Vis M.5x45	ZZ950910
1.4	Prolunga asta deviatore ceramico Extension 4-ways diverter Verlängerung Prolonge inverseur ceramique	ZZ928530	7	Cannotto di copertura per thermostab. Covering tube for thermostatic mixer Hülse f. Thermostabatterie Tube de couverture pour thermostab.	ZZ936440			
2	Calotta di bloccaggio ghiera selezionatrice Nut for selecting ring Mutter Ecrou de blocage Ghiera selezione uscite	ZZ936410	8	Calotta di bloccaggio cartuccia term. Fixing nut for thermostatic cartridge Mutter f. Thermostabent Ecrou de fixation cartouche thermost.	ZZ933190			
3	Selecting ring Wahlmutter Embout sélectionneur	ZZ936420	9	Cannotto limitatore di temperatura HY Tube - temperature device "HY" Hülse Temperaturbegl. "HY" Limiteur tempèral. "HY"	ZZ933210			
4	Calotta bloccaggio cartuccia deviatore Nut 4-way ceramic diverter Mutter Ecrou de blocage	ZZ936430	10	Rondella ottone 36x30x1,5 Ring in brass 36x30x1,5 Unterlegscheibe 36x30x1,5 Joint laiton 36x30x1,5	ZZ933200			
5	Cartuccia deviatore 6 vie Cartridge 6-way diverter Cartouche 6-Wege - UMST Cartouche inverseur	ZZ945040	11	Cartuccia miscelatore termostab. incasso Thermostatic valve-concealed mixer HY Thermostabent - AB - "HY" Cartouche "HY" encastrè	ZZ931860			



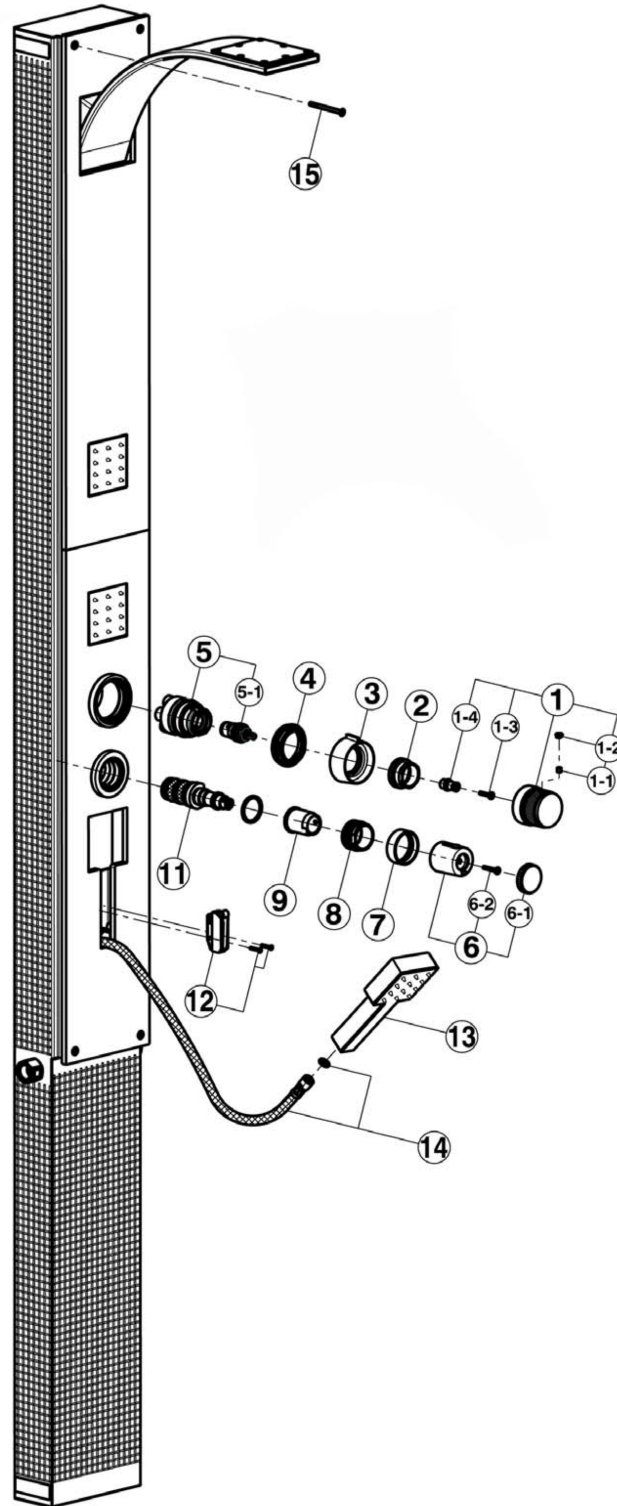
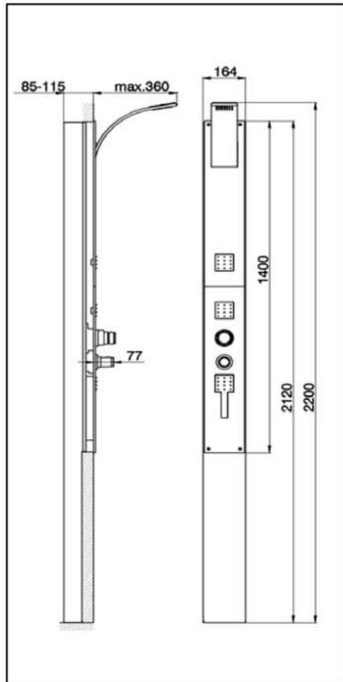
WA005000

<https://es.cisal.it/panel-de-ducha-termostatico-2-funciones-wave-wa005000>

## Panel de ducha termostático 2 funciones WAVE\_WA005000

# cisal

### WA 00500



WA005000

<https://es.cisal.it/panel-de-ducha-termostatico-2-funciones-wave-wa005000>

## Panel de ducha termostático 2 funciones WAVE\_WA005000

# cisal

### WA 00500

NR.	DESCRIZIONE DESCRIPTION BESCREIBUNG DESCRIPTION	N.CODICE CODE NO. WERSKNR. NR.CODE	NR.	DESCRIZIONE DESCRIPTION BESCREIBUNG DESCRIPTION	N.CODICE CODE NO. WERSKNR. NR.CODE	NR.	DESCRIZIONE DESCRIPTION BESCREIBUNG DESCRIPTION	N.CODICE CODE NO. WERSKNR. NR.CODE
1	Maniglia deviatore ceramico 4 vie "LS" Handle 4-way diverter "LS" Griff f/4 Wege Umsteller "LS" Croisillon inverseur ceramique "LS"	ZZ933790	5-1	Vitone 1/2" Headvalve 1/2" Oberteil 1/2" Tête 1/2"	ZZ940500	12	Dispositivo di sblocco per doccia Release device for shower Absperrvorrichtung fuer Braise Dispositif de déblocage pour douche	ZZ945060
1-1	Grano punta piana inox M.6x6 Screw-stainless steel M.6x6 Madenschraube M.6x6 Vis speciale inox M.6x6 Placchetta per leva neutra	ZZ926450	6	Maniglia "LS" regolazione temperatura Handle - temperature set-up "LS" Griff "LS" Temperaturuebergrenzer Croisillon "LS" gradué	ZZ935660	13	Doccia WA Handshower WA Handbrause WA Douchette	ZZ945080
1-2	Cap for lever Abdeckkappe f/Hebel Plaqueette levier	ZZ927110	6-1	Placchetta maniglia "LS" per termostat. Cap "LS" lever for thermostatic mixer Abdeckkappe Griff "LS" f.Thermostatb. Plaqueette croisillon LS pour thermostat.	ZZ935670	14	Flessibile M.15x1G M.15x1F Flex M.15x1G M.15x1F Anschluss Schlauch M.15x1G M.15x1F Flex M.15x1G M.15x1F	ZZ945050
1-3	Vite M.4x20 tb. tc. zigrinata Screw M.4x20 Schraube M.4x20 Vis M.4x20	ZZ926500	6-2	Vite M.4x25 Screw M.4x25 Schraube M.4x25 Vis M.4x25	ZZ933120	15	Vite M.5x45 Screw M.5x45 Schraube M.5x45 Vis M.5x45	ZZ950910
1-4	Prolunga asta deviatore ceramico Extension 4-ways diverter Verlaengerung Rallonge inverseur ceramique	ZZ926530	7	Cannotto di copertura per termostat. Covering tube for thermostatic mixer Huelse f.Thermostatbatterie Tube de couverture pour thermostat.	ZZ936440			
2	Calotta di bloccaggio ghiera selezionatrice Nut for selecting ring Mutter Ecrou de blocage	ZZ936410	8	Calotta di bloccaggio cartuccia term. Fixing nut for thermostatic cartridge Mutter f.Thermoventil Ecrou de fixation cartouche thermost.	ZZ933190			
3	Ghiera selezione uscite Selecting ring Wahlmutter Embout sélectionneur	ZZ936420	9	Cannotto limitatore di temperatura HY Tube - temperature device "HY" Huelse Temperaturbegr. "HY" Limiteur temperat. "HY"	ZZ933210			
4	Calotta bloccaggio cartuccia deviatore Nut 6-way ceramic diverter Mutter Ecrou de blocage	ZZ936430	10	Rondella ottone 36x30x1,5 Ring in brass 36x30x1,5 Unterlegscheibe 36x30x1,5 Joint laiton 36x30x1,5	ZZ933200			
5	Cartuccia deviatore 6 vie Cartridge 6 - way diverter Kartusche - 6 Wege - UMST Cartouche inverseur	ZZ945040	11	Cartuccia miscelatore termost.incasto Thermostatic valve-concealed mixer HY Thermoelement - AP - "HY" Cartouche "HY" encastré	ZZ931860			

WA005000

<https://es.cisal.it/panel-de-ducha-termostatico-2-funciones-wave-wa005000>

2025-01-21