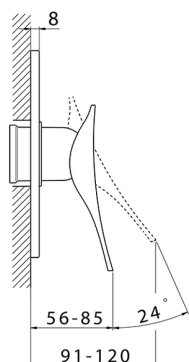
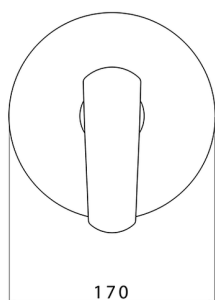








## Parte externa monomando ducha empotrada ROADSTER ACCENT\_RA003000

MODELO **RA003000**

Parte externa monomando ducha empotrada, sin parte empotrada, para art. ZA005300



### ACABADOS DISPONIBLES

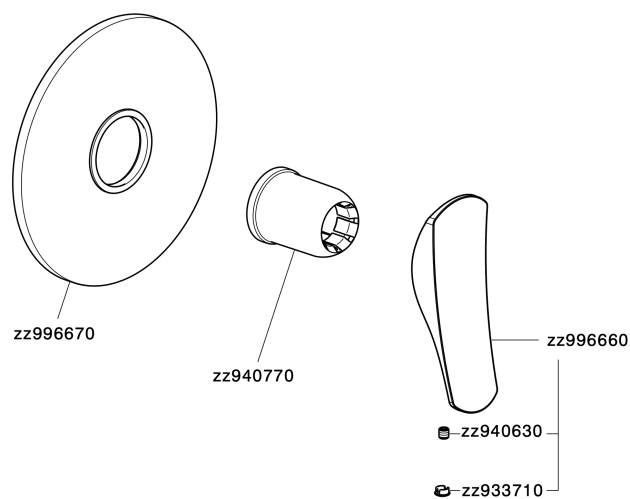
-  **21** 21 Cromo
-  **2B** 2B Niquel Brillo
-  **2F** 2F Niquel Cepillado
-  **2Q** 2Q Black Titanium
-  **40** 40 Negro Mate
-  **4Q** 4Q Blanco Mate

### CARACTERÍSTICAS

Instalación **Empotrado**  
 Empotrado 1 **ZA005300**



## Parte externa monomando ducha empotrada ROADSTER ACCENT\_RA003000



RA003000

<https://es.cisal.it/parte-externa-monomando-ducha-empotrada-roadster-accent-ra003000>

## Parte empotrada monomando ducha EMPOTRADO\_ZA005300



MODELO **ZA005300**

Parte empotrada monomando ducha, ducha empotrada 1/2", sin parte externa

ACABADOS DISPONIBLES



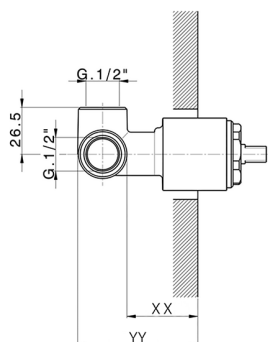
**04** 04 Sin acabado

CARACTERÍSTICAS

Recambio Cartucho **ZZ94035000**

Empotrado **1**

**Cartucho Monomando 35 mm**



Piastra/Plate/Plaque/Platte/Placa  
 2-3mm: XX 27-47 YY 54-74  
 10mm: XX 16-40 YY 43-68



2024-11-23