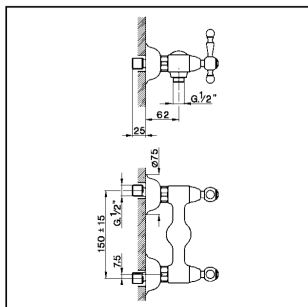


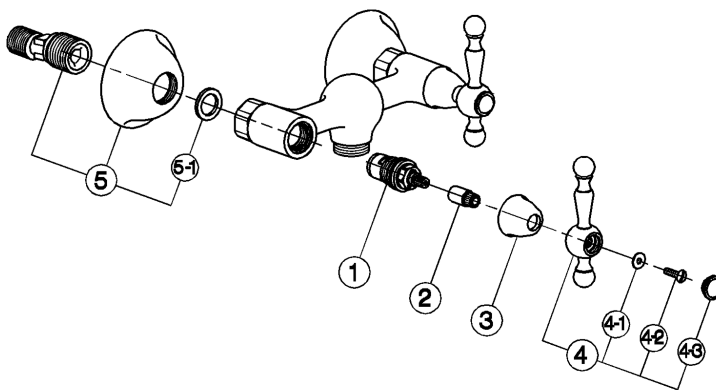
Ducha ARCANA AMERICA_AA000441

cisal

AA 00044



- Gruppo doccia esterno
- Wall-mounted shower mixer
- Brausebatterie
- Mélangeur douche



| bar | PORTATA * FLOW RATE DURCHFLOSS DEBIT l/min. |
|-----|---|
| 0.5 | 10 |
| 1 | 14 |
| 2 | 19.5 |
| 3 | 24 |
| 4 | 27.5 |
| 5 | 31 |

* con resistenza silenziosa della classe di portata B (25.2 l/min. a 3 bar)
with hydraulic resistance of flow rate class B (25.2 l/min. at 3 bar)
mit geräuscharmen Widerstand der Durchflussklasse B (25.2 l/min. bei 3 bar)
avec aérateur classe B (25.2 l/min. à 3 bar)

| NR. | DESCRIZIONE DESCRIPTION BESCHREIBUNG DESCRIPTION | N. CODICE CODE NO. WERKSNR. NR. CODE | NR. | DESCRIZIONE DESCRIPTION BESCHREIBUNG DESCRIPTION | N. CODICE CODE NO. WERKSNR. NR. CODE | NR. | DESCRIZIONE DESCRIPTION BESCHREIBUNG DESCRIPTION | N. CODICE CODE NO. WERKSNR. NR. CODE |
|-----|--|---|-----|--|---|-----|---|---|
| 1 | Vitone ceramico 1/2" DX 90° Ceramic headvalve 1/2" right 90° Keramikoberteil 1/2" - rechts - 90° Tête céram. 1/2" droite 90° | ZZ 92907 0 | 5-1 | Guarnizione NBR 90 SH. 24x16x2,7 Gasket NBR 90 SH. 24x16x2,7 Dichtung NBR 90 SH. 24x16x2,7 Joint NBR 90 SH. 24x16x2,7 | ZZ 92689 0 | | | |
| 1 | Vitone ceramico 1/2" SX 90° Ceramic headvalve 1/2" left 90° Keramikoberteil 1/2" - links - 90° Tête céram. 1/2" gauche 90° | ZZ 92906 0 | | | | | | |
| 2 | Prolunga asta vitone monofon "AA" Extension for headvalve "AA" Verlängerung 1/Einlochbatterie "AA" Rallonge levier "AA" | ZZ 92671 0 | | | | | | |
| 3 | Cappuccio coprivitone Ø32 H.21 "AC" Escutcheon Ø32 H.21 "AC" headvalve Abdeckkappe Ø32 H.21 "AC" Rosace couvre-tête Ø32 H.21 "AC" | ZZ 92652 0 | | | | | | |
| 4 | Leva "AA" con vite e placchetta Lever with screw and plate "AA" Hebel "AA" mit Schraube und Abdeckkappe Levier "AA" avec vis et plaquette | ZZ 92974 0 | | | | | | |
| 4-1 | Rondella ottone 12x4,3x1 Ring in brass 12x4,3x1 Unterlegscheibe 12x4,3x1 Joint lalton 12x4,3x1 | ZZ 92673 0 | | | | | | |
| 4-2 | Vite M.4x20 to. tc. zigrinata Screw M.4x20 Schraube M.4x20 Vis M.4x20 | ZZ 92650 0 | | | | | | |
| 4-3 | Placchetta a vite maniglia "AR" Cap for handle "AR" Abdeckkappe "AR" CnH Plaquette cache - vis crois. "AR" | ZZ 92617 0 | | | | | | |
| 5 | Eccentrico con rosone "AC" Eccentric connection with escutcheon "AC" S - Anschluss m. Rosette "AC" Eccentrique + rosace "AC" | ZZ 92826 0 | | | | | | |

AA.5

AA000441

<https://es.cisal.it/ducha-arcana-americaaa000441>

2024-11-01