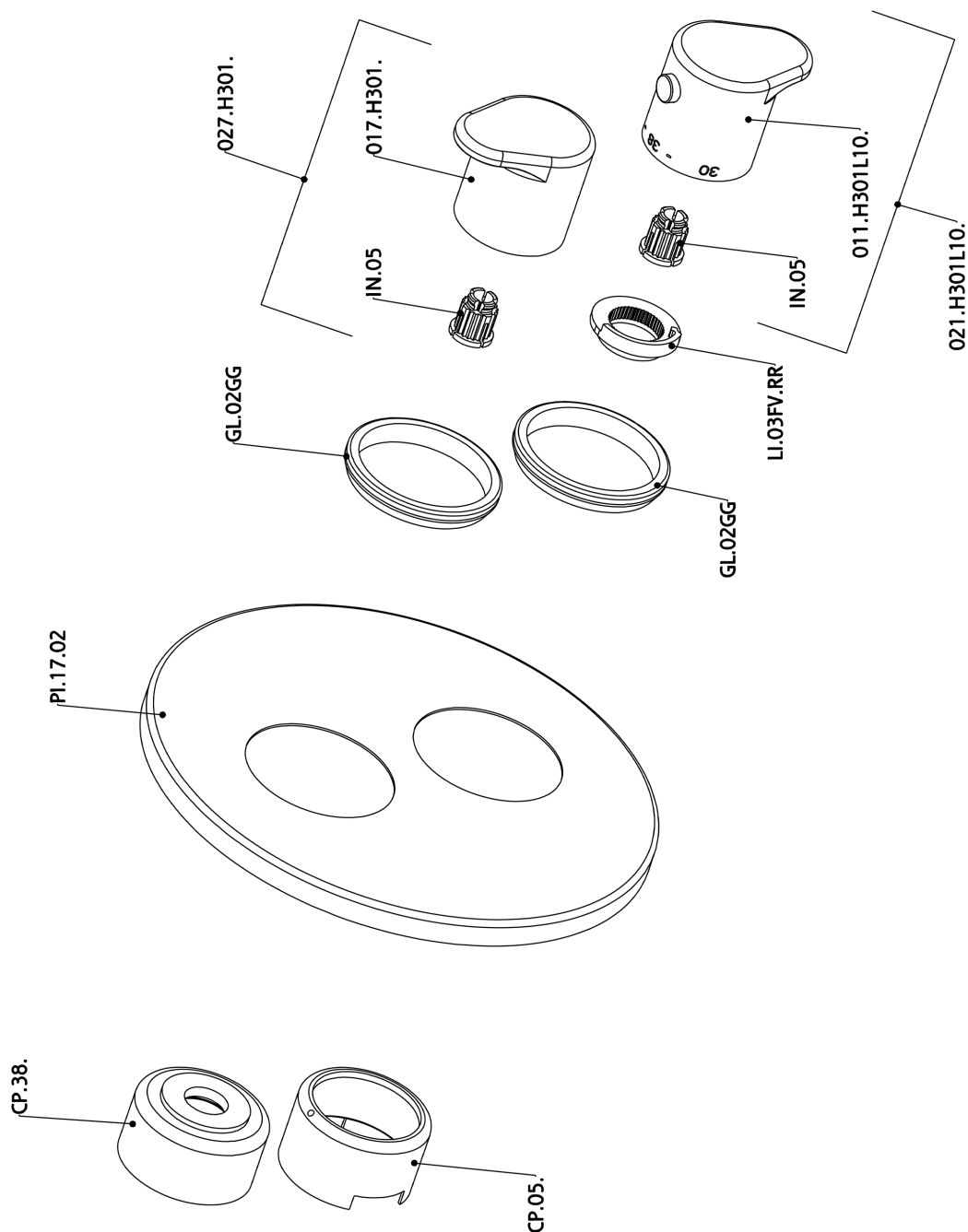


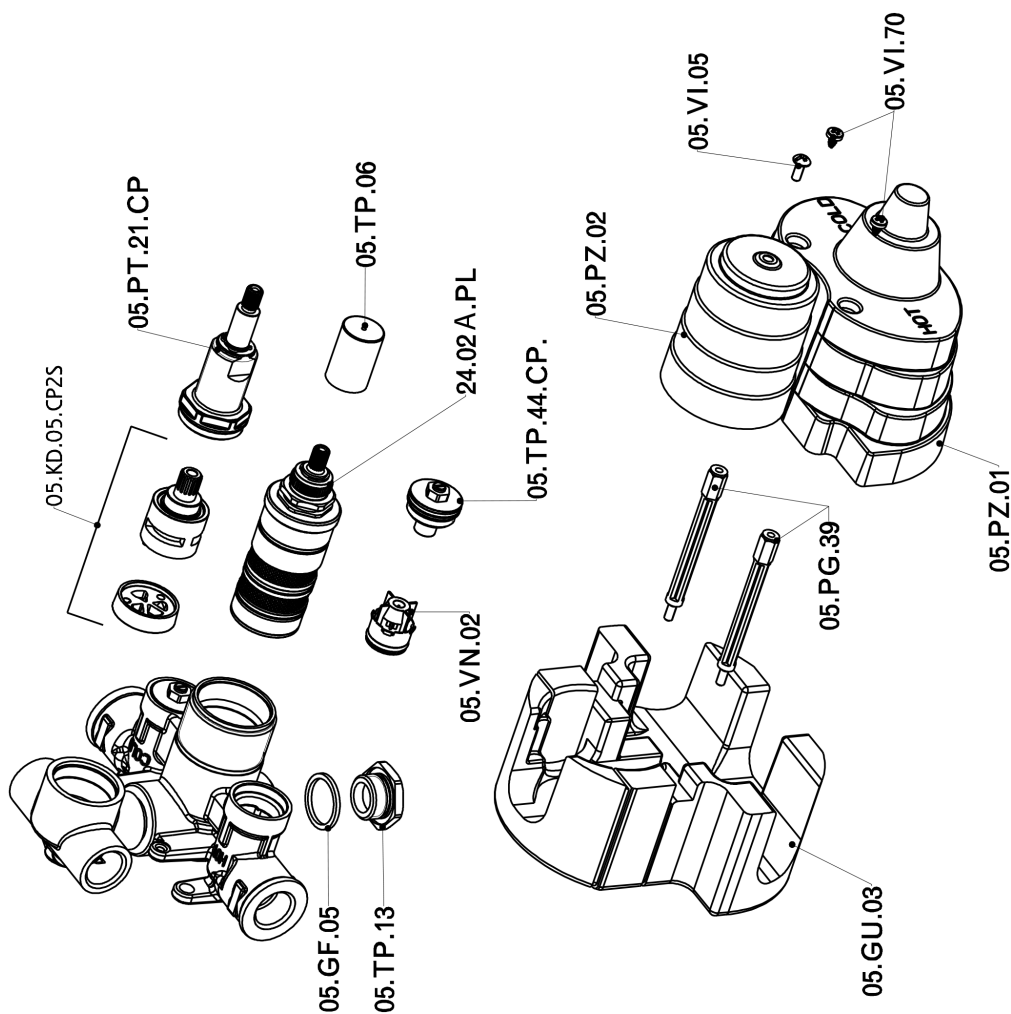
## Parte externa termostático ducha emp. 2 salidas ALMA\_A3018100



A3018100

<https://es.cisal.it/parte-externa-termostatico-ducha-emp-2-salidas-alma-a3018100>

## Parte empotrada termostático ducha 2 salidas EMPOTRADO\_ZA018101



ZA018101

<https://es.cisal.it/parte-empotrada-termostatico-ducha-2-salidas-empotrado-za018101>

2026-06-19