







Llave de paso empotrada ARCANA AMERICA_AA000310

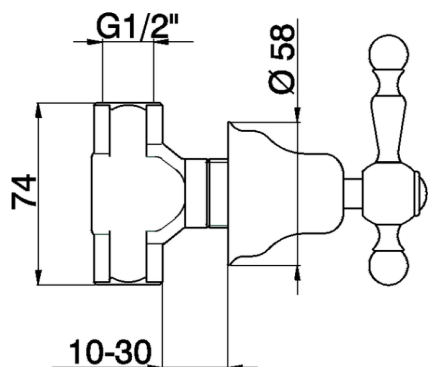
MODELO **AA000310**

Llave de paso empotrada, para agua fría, salida 1/2" F



ACABADOS DISPONIBLES

-  **21** 21 Cromo
-  **24** 24 Oro
-  **26** 26 Cobre Viejo
-  **27** 27 Bronce Viejo
-  **2A** 2A Niquel Satinado Cepillado
-  **74** 74 Cromo/Oro



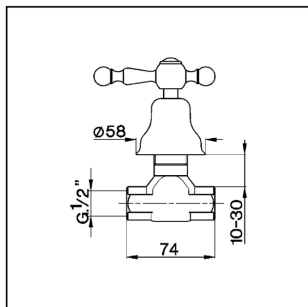
CARACTERÍSTICAS



Llave de paso empotrada ARCANA AMERICA_AA000310

cisal

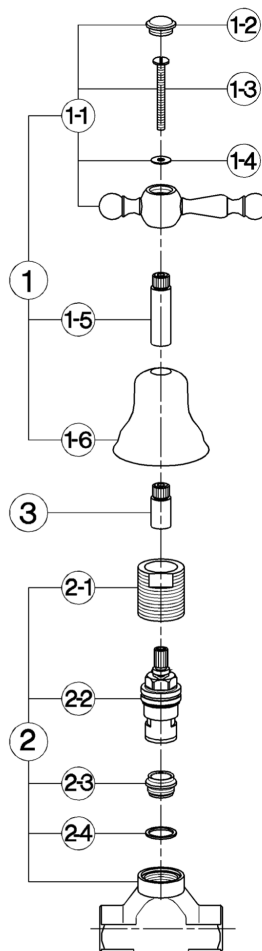
AA 00031



- Rubinetto incasso
- Concealed valve
- UP-Ventil
- Robinet à encastrer

bar	PORTATA * FLOW RATE DURCHFLOSS DEBIT l/min.
0.1	6.5
0.3	9
0.5	11.5
1	13.5
2	15
3	21.5

* senza resistenza silenziosa (uscita libera)
without hydraulic resistance
ohne Widerstand
sans résistance hydraulique



NR.	DESCRIZIONE DESCRIPTION BESCHREIBUNG DESCRIPTION	N. CODICE CODE NO. WERKSNR. NR. CODE
1	Leva con cappuccio "AA" Lever with escutcheon "AA" Hebel "AA" mit Abdeckkappe Lever "AA" avec rosace	ZZ 92976 0
1-1	Leva "AA" con vite e placchetta Lever with screw and plate "AA" Hebel "AA" mit Schraube und Abdeckkappe Lever "AA" avec vis et plaque	ZZ 92977 0
1-2	Placchetta a vite maniglia "AR" Cap for handle "AR" Abdeckkappe "AR" Griff Plaque à vis manivelle "AR"	ZZ 92617 0
1-3	Vite M.4x55 tc. Screw M.4x55 Schraube M.4x55 Vis M.4x55	ZZ 92655 0
1-4	Rondella ottone 12x4,3x1 Ring in brass 12x4,3x1 Unterlegscheibe 12x4,3x1 Joint laiton 12x4,3x1	ZZ 92673 0
1-5	Prolunga asta vitone batterie "AA" Extension for headvalve "AA" - long Verlängerung l/Batterie "AA" Rallonge levier "AA"	ZZ 92672 0

NR.	DESCRIZIONE DESCRIPTION BESCHREIBUNG DESCRIPTION	N. CODICE CODE NO. WERKSNR. NR. CODE
1-6	Cappuccio e campana "AR" Escutcheon "AR" Abdeckkappe "AR" Rosace "AR"	ZZ 92598 0
2	Rubinetto incasso 1/2" Concealed stop cock 1/2" Unterputventil 1/2" Robinet à encastrer 1/2"	ZZ 92982 0
2	Rubinetto incasso 3/4" Concealed stop cock 3/4" Unterputventil 3/4" Robinet à encastrer 3/4"	ZZ 92979 0
2-1	Riduzione capp. bordo vasca e incasso Reduction for bath escutcheon Reduzierstück Reduction rosace	ZZ 92682 0
2-2	Vitone ceramico 1/2" DX 90° Ceramic headvalve 1/2" right 90° Keramikoberteil 1/2" - rechts - 90° Tête céram. 1/2" droite 90°	ZZ 92907 0
2-3	Sede rubinetto incasso 1/2" Seat 1/2" Sitz 1/2"	ZZ 92658 0

NR.	DESCRIZIONE DESCRIPTION BESCHREIBUNG DESCRIPTION	N. CODICE CODE NO. WERKSNR. NR. CODE
2-4	Guarnizione rame 18,5x16,1x1 Gasket copper 18,5x16,1x1 Kupferdichtung 18,5x16,1x1 Joint cuivre 18,5x16,1x1	ZZ 92656 0
3	Prolunga asta vitone per rubinetto incasso Extension for headvalve Verlängerung l/Oberteil Rallonge	ZZ 92651 0

AA.4

AA000310

<https://es.cisal.it/llave-de-paso-empotrada-arcana-america-aa000310>

2026-05-01