







## Llave de paso empotrada ARCANA AMERICA\_AA000310

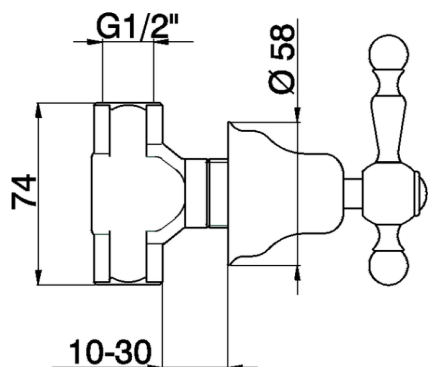
MODELO **AA000310**

Llave de paso empotrada, para agua fría, salida 1/2" F



### ACABADOS DISPONIBLES

-  **21** 21 Cromo
-  **24** 24 Oro
-  **26** 26 Cobre Viejo
-  **27** 27 Bronce Viejo
-  **2A** 2A Niquel Satinado Cepillado
-  **74** 74 Cromo/Oro



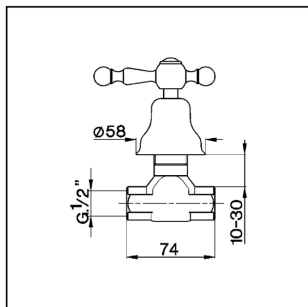
### CARACTERÍSTICAS



## Llave de paso empotrada ARCANA AMERICA\_AA000310

**cisal**

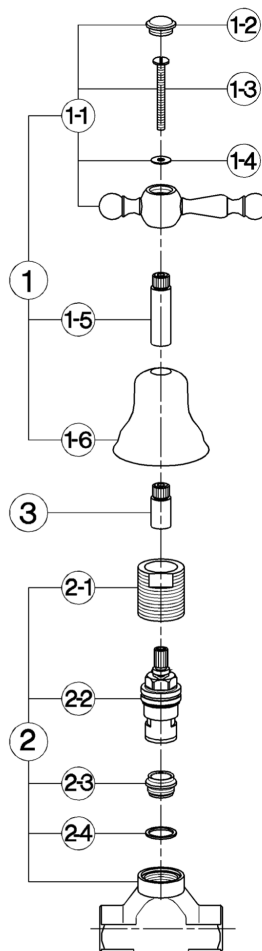
### AA 00031



- Rubinetto incasso
- Concealed valve
- UP-Ventil
- Robinet à encastrer

bar	PORTATA * FLOW RATE DURCHFLOSS DEBIT l/min.
0.1	6.5
0.3	9
0.5	11.5
1	13.5
2	15
3	21.5

\* senza resistenza silenziosa (uscita libera)  
without hydraulic resistance  
ohne Widerstand  
sans résistance hydraulique



NR.	DESCRIZIONE DESCRIPTION BESCHREIBUNG DESCRIPTION	N. CODICE CODE NO. WERKSNR. NR. CODE	NR.	DESCRIZIONE DESCRIPTION BESCHREIBUNG DESCRIPTION	N. CODICE CODE NO. WERKSNR. NR. CODE	NR.	DESCRIZIONE DESCRIPTION BESCHREIBUNG DESCRIPTION	N. CODICE CODE NO. WERKSNR. NR. CODE
1	Leva con cappuccio "AA" Lever with escutcheon "AA" Hebel "AA" mit Abdeckkappe Lever "AA" avec rosace	ZZ 92976 0	1-6	Cappuccio e campana "AR" Escutcheon "AR" Abdeckkappe "AR" Rosace "AR"	ZZ 92598 0	2-4	Guarnizione rame 18,5x16,1x1 Gasket copper 18,5x16,1x1 Kupferdichtung 18,5x16,1x1 Joint cuivre 18,5x16,1x1	ZZ 92656 0
1-1	Leva "AA" con vite e placchetta Lever with screw and plate "AA" Hebel "AA" mit Schraube und Abdeckkappe Lever "AA" avec vis et plaque	ZZ 92977 0	2	Rubinetto incasso 1/2" Concealed stop cock 1/2" Unterputzventil 1/2" Robinet à encastrer 1/2"	ZZ 92982 0	3	Prolunga asta vitone per rubinetto incasso Extension for headvalve Verlängerung 1/Oberteil Rallonge	ZZ 92651 0
1-2	Placchetta a vite maniglia "AR" Cap for handle "AR" Abdeckkappe "AR" Griff Plaque cache-vis crois. "AR"	ZZ 92617 0	2	Rubinetto incasso 3/4" Concealed stop cock 3/4" Unterputzventil 3/4" Robinet à encastrer 3/4"	ZZ 92979 0			
1-3	Vite M.4x55 tc. Screw M.4x55 Schraube M.4x55 Vis M.4x55	ZZ 92655 0	2-1	Riduzione capp. bordo vasca e incasso Reduction for bath escutcheon Reduzierstueck Reduction rosace	ZZ 92682 0			
1-4	Rondella ottone 12x4,3x1 Ring in brass 12x4,3x1 Unterlegscheibe 12x4,3x1 Joint laiton 12x4,3x1	ZZ 92673 0	2-2	Vitone ceramico 1/2" DX 90° Ceramic headvalve 1/2" right 90° Keramikoberteil 1/2" rechts - 90° Tête céram. 1/2" droite 90°	ZZ 92907 0			
1-5	Prolunga asta vitone batterie "AA" Extension for headvalve "AA" - long Verlängerung 1/Batterie "AA" Rallonge levier "AA"	ZZ 92672 0	2-3	Sede rubinetto incasso 1/2" Seat 1/2" Sitz 1/2"	ZZ 92658 0			

AA.4

AA000310

<https://es.cisal.it/llave-de-paso-empotrada-arcana-america-aa000310>

2026-04-29